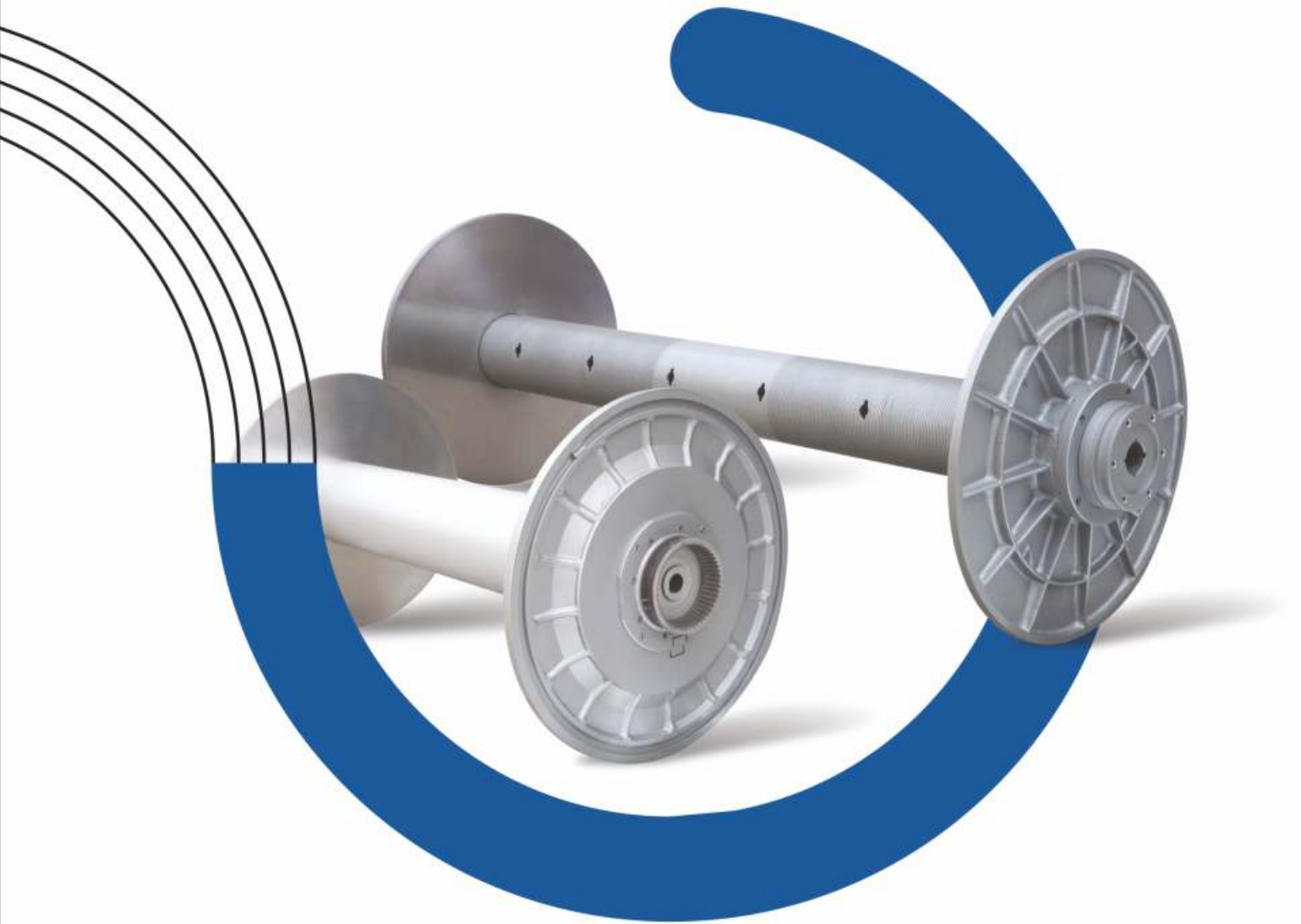


# BHARAT BEAMS

Manufacturers of Weaver's Beams  
&  
Dynamically balanced Warper Beams



**EXCELLENCE IN**  
WARPER & WEAVER BEAMS

[www.bharatbeams.com](http://www.bharatbeams.com)

## About Us

Textiles have come a long way since their inception. We have been manufacturing quality Warper Beams and Weaver beams since long. Bharat Beams exists to serve wide-ranging customer needs with highest operational capability and talented team. Our commitment to execute research and test-based development made us a leader in our field. Our dedicated team creates and improves product for varied needs of textile industry.

## Exceptional Services

Our dedication to offer exceptional services to our clients is demonstrated through our customer satisfaction. We execute in-plant load analysis of flanges for stress / strain relationships. The resulting data from the analysis is utilized for selection of right type of flanges to fulfill customer's requirement.

## Mission

Deliver wide range of quality products through innovative methods and creative solutions.

## Vision

To establish Bharat Beams as a highly reputed name in the textile industry business throughout the globe.

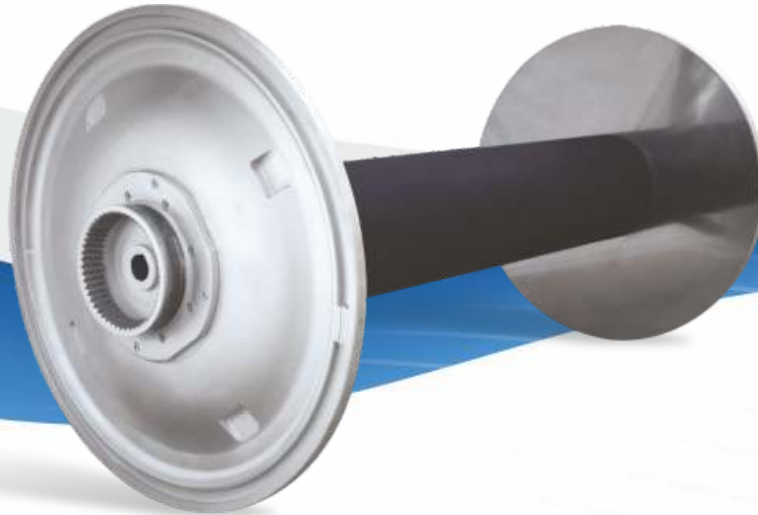
## Facilities

- State of the art aluminum foundry for casting of aluminum flanges
- Integrated manufacturing facility with high precision machinery
- Full fledged inspection dept. with latest digital measuring instruments
- Computerised dynamic balancing machines
- In-house facility for zinc-plating beam barrels
- Fully automated slotting machines to ensure hubs are manufactured as per ISO/DIN norms
- We manufacture wide range of beams as per ISO/DIN norms
- We manufacture warper and weaver beams suitable for natural fiber yarns and for man-made fiber yarns utilized in synthetic industry as well as in technical textiles.

“TOWARDS A  
NEW FUTURE

## Warper Beams

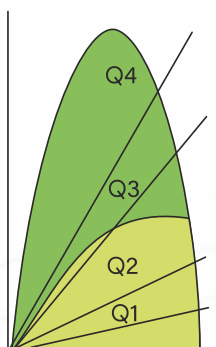
We offer dynamically balanced warper beams of flange diameter upto 1600 mm and warping width upto 2800 mm suitable for Benninger, Karl Mayer, Hacoba, Ramallumin, UKIL, Tsudakoma, Prashant West – Point, Jupiter, Prism and other high speed warping machines suitable for spun and filament yarn.



## Double-Walled Flanges and Re-inforced Ribbed Flanges



All warper beams are assembled and dynamically balanced as per ISO/DIN norms. Each beam passes through rigorous inspection process to ascertain highest quality standard.

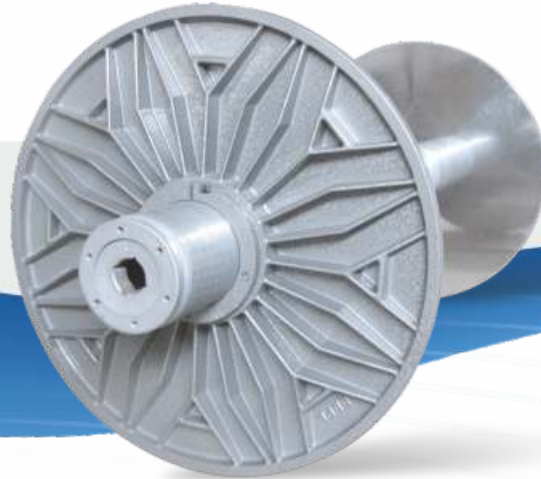


### Quality Classes for Flanges

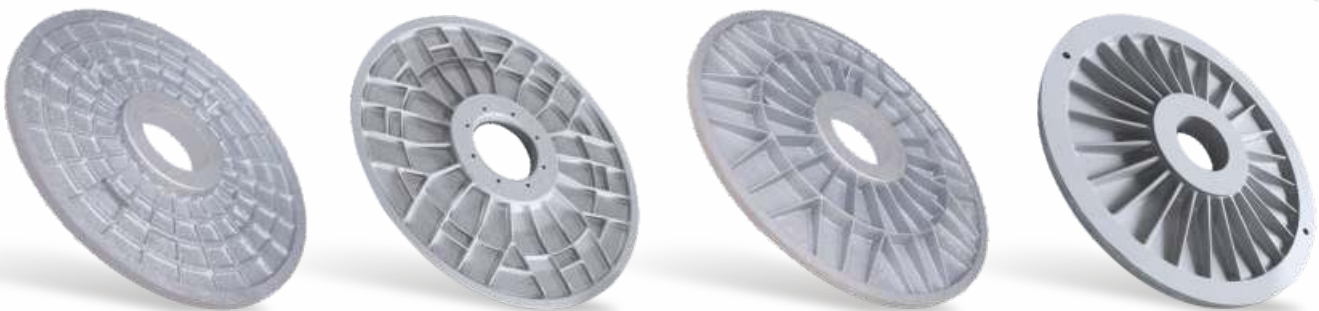
- Q1 ——— 20 kN/mm < Q1 < 50 kN/mm - Light
- Q2 ——— 50 kN/mm < Q2 < 125 kN/mm - Medium
- Q3 ——— 125 kN/mm < Q3 < 200 kN/mm - Heavy
- Q4 ——— 200 kN/mm < Q4 - Extra Heavy

## Weaver Beams

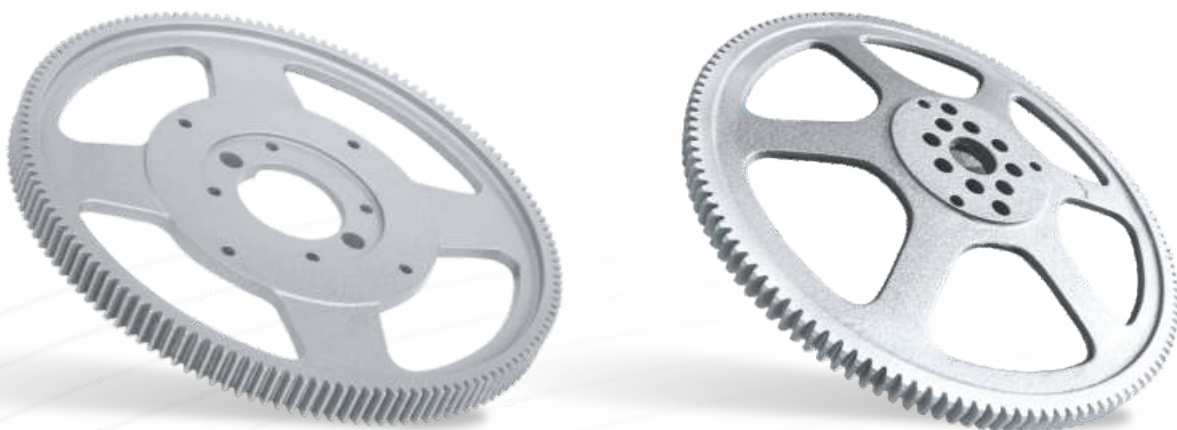
Weaver Beams for Picanol, Toyota, Tsudakoma, Sulzer, Dornier, Itema, Smit and other types of Airjet, Rapier and Projectile weaving machines in single section and double section construction with or without differential motions upto 1250mm flange diameter and 560 cms reedwidth.



## Wide variety of Ribbed Flanges



## Drive Gear



## Chucks and Hubs

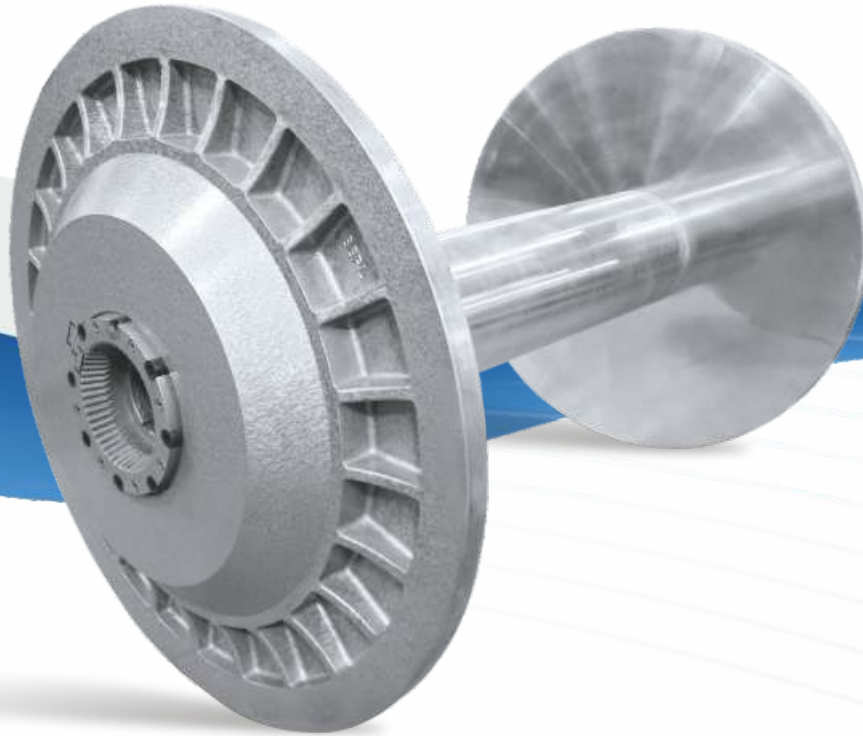


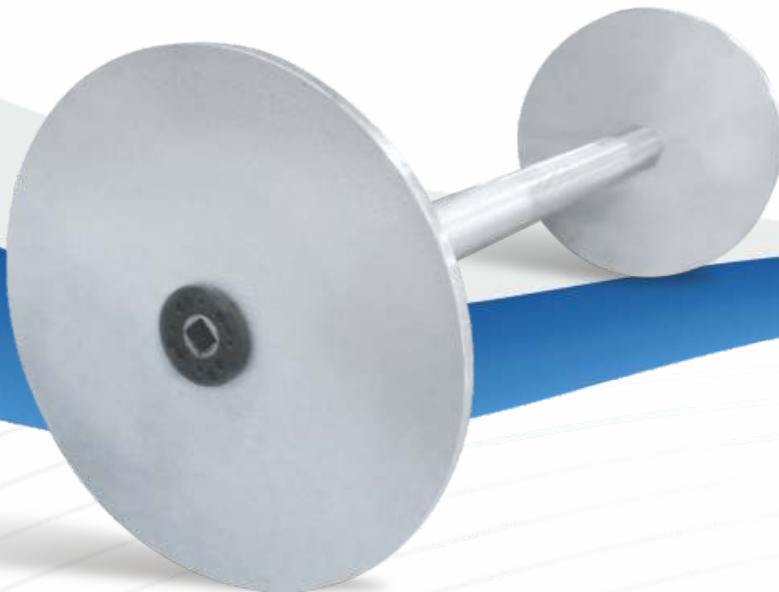
## Cloth Rolls



## Heavy Duty Beams for Technical Textiles

For over 25 years, we have been manufacturing Q3 quality class ( HEAVY DUTY ) and Q4 quality class ( VERY HEAVY DUTY ) warp beams as well as dynamically balanced warper beams for TECHNICAL TEXTILES INDUSTRY upto 1250mm flange diameter and 5.6 metres reedwidth. We also cater to the customized requirement of beams for our customers' special needs / application. Customers can warp 100% relaxed filament yarn, polyester yarn, PP flat tape yarn on Q3 quality beams, whereas Q4 quality warp beams cater to the requirement of 100% un-relaxed filament yarn, monofilament yarn, nylon yarn, carbon fiber yarn, aramide yarn and other very high tenacity industrial yarn in warp.







# BHARAT BEAMS


Manufacturers of Weaver's Beams  
&  
Dynamically balanced Warper Beams




## BHARAT BEAMS PRIVATE LIMITED

 Plot No. 10/3, Phase I, G.I.D.C.,  
Vatva Industrial Estate,  
Ahmedabad - 382 445. INDIA.

 snehal@bharatbeams.com,  
info@bharatbeams.com,  
jcpanchal@bharatbeams.com

 +91 79 29706768 / 40321148

 [www.bharatbeams.com](http://www.bharatbeams.com)